



CONSTANCE
LEMURIA
PRASLIN, SEYCHELLES

ESCAPE TO A LUSH
OASIS OF TROPICAL
REFINEMENT

FACTSHEET

Nourish all your senses in this beautiful, 5* secluded paradise. Elegantly nestled in its surroundings, empty white sandy beaches co-exist with lush flora and fauna, including a turtle sanctuary.

Play on the only 18-hole golf course of the Seychelles.

Balance indulgence with perfect simplicity and room to breathe.

LOCATION

An exclusive 5-star deluxe Constance Lemuria with its own 18-hole championship golf course unique to the Seychelles. Opened in December 1999 and completely renovated in 2016. The modern approach to design and quality of the buildings compliment the expectations of guests who enjoy the standard of luxury and yet the comfort in harmony with the preserved natural beauty of the environment.

FACILITIES



RESTAURANTS & BARS



GOLF



SPA



TENNIS



DIVING



HONEYMOON WEDDING



KIDS CLUBS



GROUPS & INCENTIVE



CONCIERGE

HIGHLIGHT OF YOUR STAY

Reconnect with wildlife in the Lemuria's Turtle Sanctuary.
Stroll on Anse Georgette, one of the three most beautiful beaches in the world. Practice your golf on the unique 18-hole championship golf course of the Seychelles.
Discover flora and fauna from the UNESCO World Heritage site: Vallée de Mai Nature Reserve.

CONSTANCE
LEMURIA
PRASLIN, SEYCHELLES



PRASLIN



ACCOMMODATION

Oriented towards the Indian Ocean within 101 hectares of land. The suites lie scattered along two pristine beaches, to both the southwest and northwest. Each suite is positioned just 15 meters from the shore, discreetly nestled among the natural Seychellois gardens. All suites feature air-conditioning, ceiling fan, bathroom with bath tub, double vanities, separate shower/WC, hairdryer, sitting area, high speed Internet & WI-FI (complimentary Internet access), mini Mac, mini-bar, safe, satellite TV, telephone answering machine, Nespresso machine, tea and coffee making facilities.



88 JUNIOR SUITES

(52 m²)

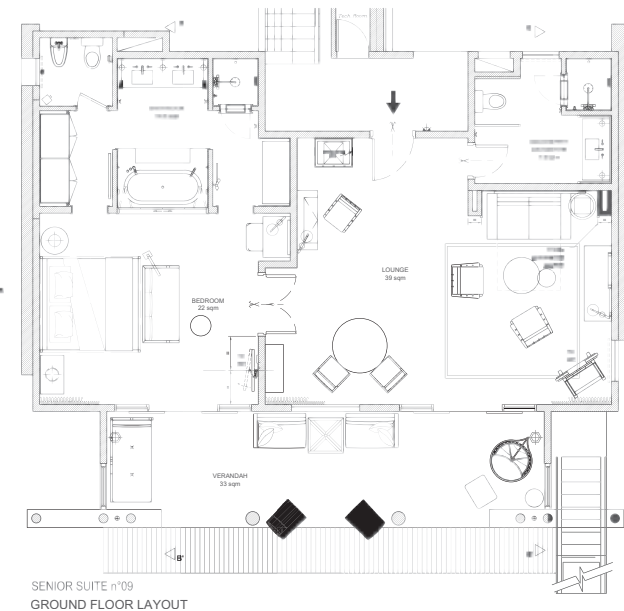
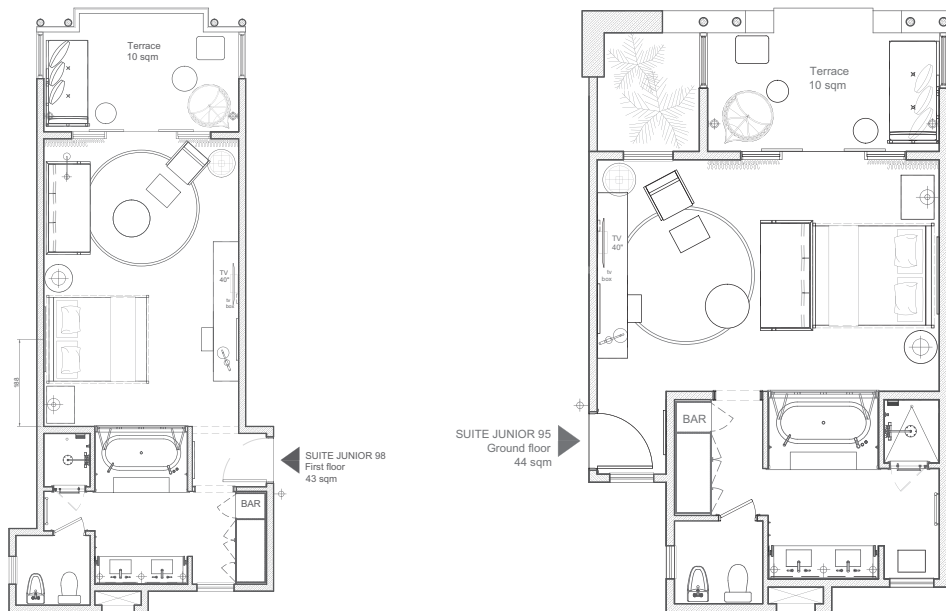
The 88 palm-thatched Junior Suites are constructed in wood, marble, limestone and pink granite. The emphasis is on privacy, intimacy and harmony with the natural surroundings. Each suite is designed in a modern yet luxurious style with large bathrooms and a fully furnished terrace/balcony with private dining space.



8 SENIOR SUITES

(115 m² including living room)

The 8 Senior Suites are exceptionally spacious. Each lavishly appointed room has all the facilities as described for junior suites but in addition have a bath tub with whirlpool in the master bathroom, separate lounge with shower/WC and a double size terrace/balcony.

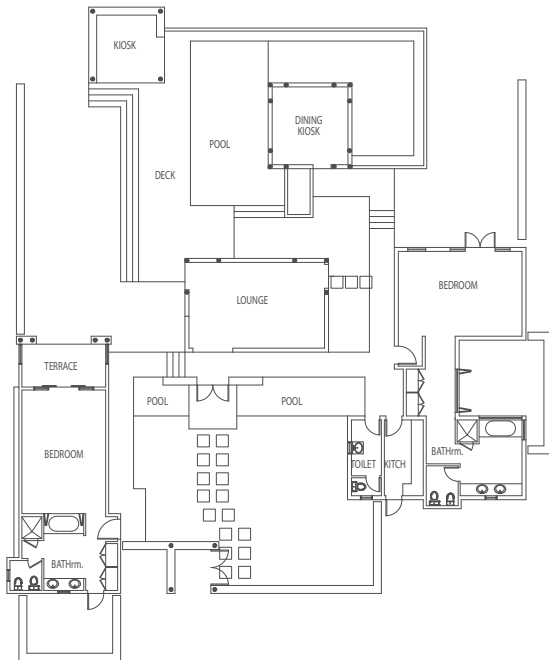




8 VILLAS
WITH PRIVATE POOL

(725 m² with 2 bedrooms)

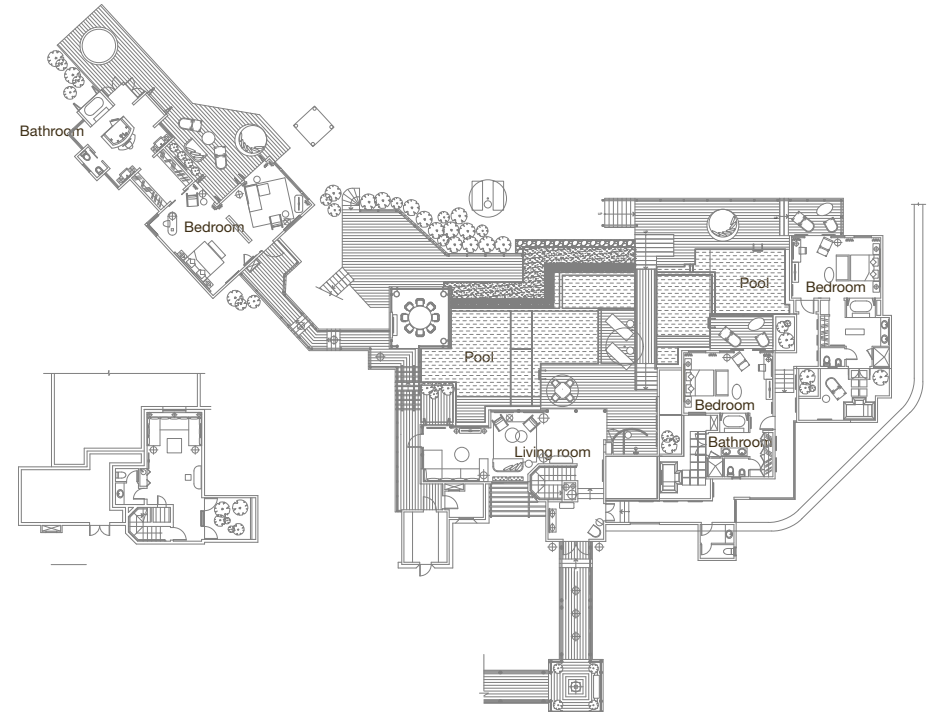
These two bedroom villas (also saleable as a one bedroom villa) at the southern tip of Anse Kerlan offer the ultimate beachside accommodation in the Indian Ocean. Spaciously designed to reflect the overall concept, the bedrooms lead directly into the gardens and beach just metres away. Two bedrooms each with spacious en-suite bathroom, outdoor shower/bath, living-/dining area with TV, kitchenette for the Villa Master and service staff. The living room leads directly outside to a dining area sunken into the private swimming pool and a personal relaxation and massage pavilion. Villa Masters take care of every requirement throughout the guests' stay, delivering an experience beyond expectation. Perfect for families or couples alike.



1 PRESIDENTIAL VILLA
WITH PRIVATE POOLS

(1250 m² with 3 bedrooms)

Majestically perched into the granite boulders on the southern tip of Anse Kerlan. A private hotel within a hotel designed and crafted to deliver a completely unique experience not found anywhere else in the Seychelles. A master suite including its own terrace bathroom with jacuzzi. Two further suites accommodate 3 multi-level pools which surround the buildings with steps leading to a private beach. Endless features such as a fully equipped office are included within the villa and a dedicated Villa master remove the need to be anywhere else in the world.



RESTAURANTS

Legend

120 seats. Open for breakfast from 07h00 to 10h30; for lunch from 12h00 to 18h00 (around the pool when the weather permits); and for dinner from 19h00 to 22h30. Overlooking the bay, Legend restaurant offers a lavish buffet for breakfast and dinner. At lunch time, a menu of international all-time favourites is served by the pool, à la carte. Every evening, our team of chefs will propose you a trip to different parts of the culinary world, and interact with you in a "show cooking" style. Pastry themes vary daily, and indulge to the infamous "chocolate extravaganza" once a week.

Diva

86 seats. Golf menu available from 09h00 to 18h00

Open for lunch from 12h00 to 15h30; and for dinner from 19h00 to 22h30. Booking is recommended. Located by the golf club, DIVA is the lifestyle outlet of the hotel. At lunch, the restaurant serves "fast good" food in a relaxed and trendy environment. In the evening, DIVA, designed by French interior designer Marc Hertrich is the place for modern and tasty cuisine served in a casual chic urban atmosphere. Inspired by Mediterranean flavours, the menu boasts different possibilities, including the pleasure of sharing some of the dishes. A truly unique venue in the Seychelles. The wine list simply is the most complete and desirable in the region and do not miss the "sommelier wine room experience".

The Nest

58 seats. Open for lunch from 12h00 to 15h30; and for dinner from 19h00 to 22h30. Booking is strongly recommended. Sample fresh seafood from the Indian Ocean in Creole style at The Nest, perfectly located on the rock peninsula between the two Anse Kerlan beaches. Sit back and enjoy the stunning beauty of Petite Anse Kerlan from the restaurant's exquisite location, and spot the delicate flight of the Paradise Fly Catcher birds during the day. The signature coconut sherbet is a must-try... At The Nest, true Creole flavours are revealed. The deck located "on the rocks" behind the restaurant is the most private location of the hotel for very exclusive dinners and the perfect place to celebrate special occasions.

Takamaka

28 seats. Open for lunch from 12h00 to 16h00

Barefoot lunch is the treat at Takamaka, just a few metres away from the turquoise water of Petite Anse Kerlan. Snack in style in this understated and simple outlet, with a selection of salads, sandwiches and ceviches. Every day, the sushi chef prepares creative sushi with a Seychellois twist.



BARS

Huna bar

Open from 08h00 till late in the evening

Located alongside the lobby and overlooking the garden, the completely redesigned, “feel good” HUNA Bar allows positive energy to flow freely. Let our mixologist CJ take you through the 7 principles of the “profound inner knowledge” of Constance Lémuria Seychelles, with a creative and delightful list of cocktails and drinks. Every evening, enjoy different entertainment and music, in a relaxed and cosy environment. Kindly note that as per Seychelles law, it is not allowed to smoke at Huna bar.

The Diva Bar

Open from 12h00 to 22h30

Located in the Diva restaurant, the bar offers a range of drinks and refreshments for golfers and during diners. You may sample a wide selection of whiskies there.

Legend Pool bar

Open from 09h00 to 19h00, weather permitting

The all-day bar to enjoy an ice-cold beer, a smoothie or a tropical cocktail by the pool or... in the pool. Meet our pet peacock while enjoying a selection of cool sundaes, delicious waffles or fancy ice-cream cones. A welcoming and comfortable al fresco smoking lounge is available just in front of the bar.

The Nest bar:

Open from 12h00 to 22h30

Set on top of the small Peninsula, the Nest bar enjoys the outstanding view of both Grande Anse and Petite Anse Kerlan beaches. The bar offers a variety of exotic and rum cocktails, as well as fresh tropical juices.

Takamaka bar:

Open from 10h00 to 19h00

Takamaka is a fresh oasis away from the sun, and the perfect place to watch the legendary Praslin sunsets while sipping your favourite cocktail.



U SPA BY CONSTANCE



Our spa haven at Constance Lémuria is set among swaying palm trees. Relax, rejuvenate, detox, re-hydrate or simply enjoy – the choice is yours. Our highly skilled team is at your disposal to help you decide which treatments are best suited to your needs. Each guest receives a Spa Experience Card, so we can keep a note of your wellness goals and preferences, and customise your treatments accordingly.

TREATMENTS

Choose from a wonderful range of U Spa Classic massages, facials and body treatments using our aromatic natural products inspired by plants from the Indian Ocean, or pick from the Valmont collection, a lush range of expert anti-ageing treatments designed by the Swiss cellular cosmetic experts, who draw on the unspoiled natural resources of Switzerland and the latest cosmetic research for their products.

SPA FACILITIES

3 single + 3 double + 1 thai massage + 1 podologue + 1 hairdresser – Sauna – Steam room – Jacuzzi – Cold plunge pool – Hairdressing

FITNESS FACILITIES

A state of the art gym, with Life Fitness Cardio equipment, fully integrated TV screens and USB ports

OPENING HOURS

For treatments: Daily 09h00 to 20h00

For wet and wellbeing area: Daily 10h00 to 16h00 and 07h00 to 21h00

For fitness: Daily 07h30 to 20h00

SPORT & LEISURES



The hotel offers a wide range of leisure activities.

FREE FACILITIES

- Sauna
- Plunge Pool
- Steam bath
- Whirlpool
- Fully equipped gymnasium

PAYABLE FACILITIES

- A range of expert anti-ageing treatments are available from the Valmont collection
- Massage and body treatments at “U Spa by Constance”
- Hairdresser

FREE ACTIVITIES

- 18-hole championship golf course (Par 70/5556m – complimentary green fees for the hotel guests, club cars are compulsory and payable)
- 2 floodlit tennis courts (synthetic floor)
- Mountain bikes – Pedalos® – Laser®, Hobie® (sailing) – Kayaks – Windsurfing – Body boards

PAYABLE ACTIVITIES

- Scuba diving (PADI diving school)
- Deep sea fishing
- Lessons: water sports, golf, diving and tennis

CONSTANCE KIDS CLUB



Young guests ages 4-11 are invited to unleash their spirit and adventure at Constance Kids Club. Fully trained and enthusiastic Coordinators will lead trips of island exploration, local crafts, culinary activities and scavenger hunts to name a few that will engage with their exciting, exotic holiday location. Discovery will be a key part of each daily theme.

Amenities & Services of Constance Kids Club include:

- Registration at any time during your stay to ensure that kids are ready to participate and play
- Safety and security is our number one priority.
- Swimming pool for free play, relays, tag games and more.
- Open play areas to show off talents, play interactive games, show movies and create a kid's circus!
- Computer stations for gaming, internet access and other activities.
- Arts & Crafts with local and traditional crafts.
- Day and evening themed programs.
- A theme day to create pizzas, make ice cream and enjoy some smoothie sweets and treats
- An imagination space for the younger 4-6 year old guests, which may include playhouses, kitchenettes, tool workshops and even some 4-wheel transportation rides
- Age appropriate washrooms for just their size.
- Outdoor space for running relays, games and playground for parental supervision play

FACILITIES



LOUNGE

This is the main place of the building which is mainly a relaxation area allowing guests to wait during high occupancy or in case of late check out or simply chilling out during their stay. Amongst the facilities available are flat screen TV 52', DVD player, Internet access with wireless connection. Three computers with flat screens fully wireless, two libraries on wood shelves complete with magazines, books and DVDs, comfortable seating area consisting of leather sofa, chairs, armchairs and lounge round table and other furniture. Three bathrooms equipped with shower, washbasin, hair dryer and shaver; one luggage rack with granite top, one comfortable sofa and a round table as well as a separate toilet. All three bathrooms are named after Constance Lemuria famous beaches, namely Anse Georgette, Petite Anse Kerlan and Grand Anse Kerlan. Complimentary tea and coffee breaks is offered to all guests visiting or transiting at the VIP Lounge between 08h00 to 22h00 daily.

MEETING FACILITIES

The Meeting room with a surface of 52, 80 square metres is equipped to a seating capacity for twenty guests only. It offers all top of the range in technological services and facilities such as automatic projector screen. (150 x 200), LCD video projector, 52' flat screen TV and music sound system, wireless internet connection, and automatic decorative lighting.

Library

A selection of books and games are available free of charge.

SHOPPING FACILITIES

The boutique "Lemuria Private Collection" offering a range of clothing products designed exclusively for Constance Lémuria. In addition swim wear, sun care products and souvenirs from the Indian Ocean are available. The boutique is situated close to the reception and is open daily from 09h00 to 19h30. The Pro Shop with a variety of golf products also designed especially for Lémuria Resort is open daily from 07h00 to 16h00. Jouel is specialised in Diamond, Tanzanite and Pearl jewellery. Located next to VIP lounge. Open every day 11h00 to 20h00.

USEFUL INFORMATION



Voltage on the island: 220 volts

Local currency: Seychelles Rupee

Time difference: + 2 hours in summer and 3 hours in winter (Europe)

Reconfirmation of guests' flight departure tickets is imperative

A valid international license is required to rent cars

Temperature: between 24°C and 30°C year round

Credit Card: American Express, MasterCard, Visa

All prices are communicated in Seychelles Rupees and inclusive of 15% Government Tax (GST) and exclusive Service Charge.

OTHER SERVICES

Arrival and departure transfer facilities upon request and payable

Helicopter transfers from and to airport (helipad on site)

Arrival/Departure lounge with bathrooms

Car rental and private car for excursions

Doctor on call

Complimentary WI-FI

Laundry and pressing


**CONSTANCE
LEMURIA**
 PRASLIN, SEYCHELLES

